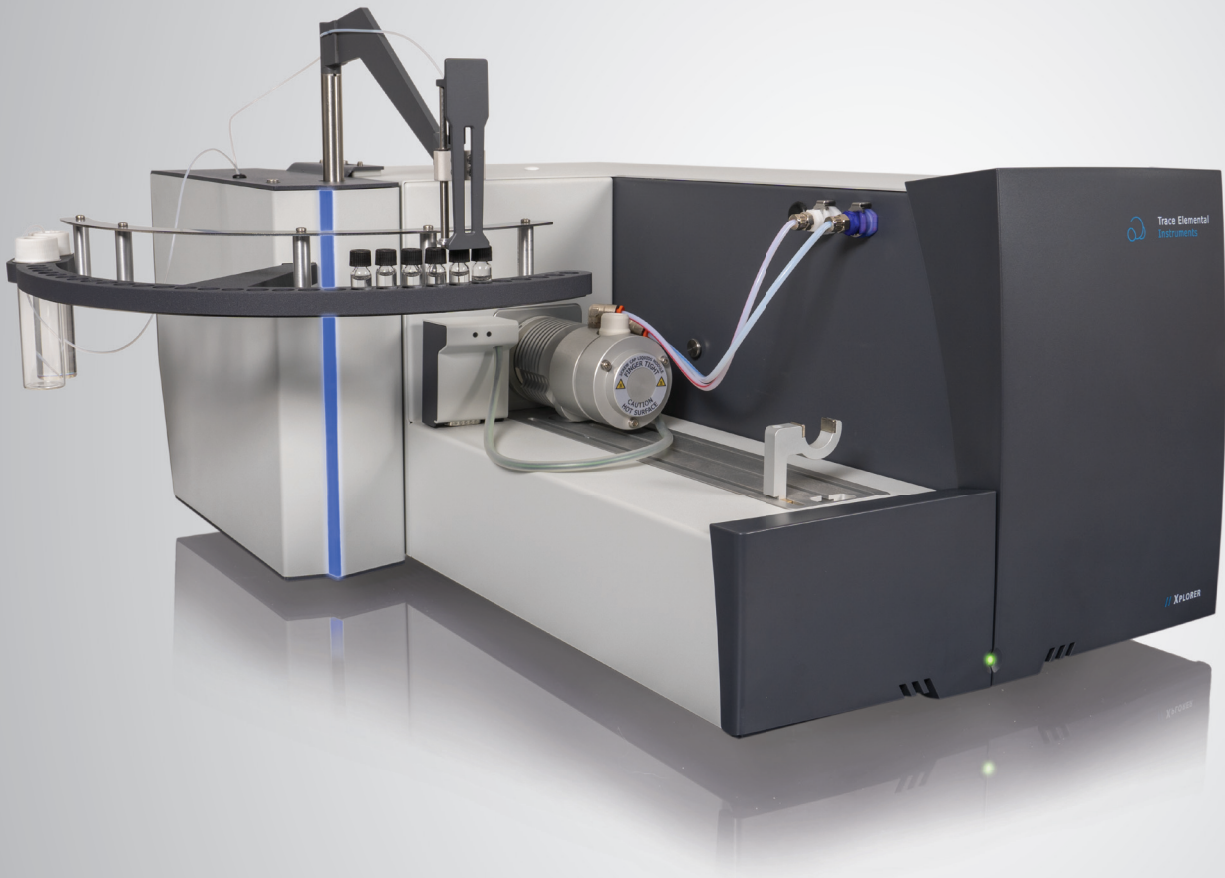




Trace Elemental  
Instruments



## // XLS-30 Liquid Autosampler

Run your liquid sample analyses completely unattended with the XLS-30, a unique automatic sampling and injection device that reduces your workload and improves analytical consistency. It operates with a constant rate injection mode and a high capacity microliter syringe to aspirate and dispense liquid samples accurately. The autosampler has been designed to offer the best balance of quality and affordability that perfectly fits the requirements of liquid applications according to international test methods such as ASTM, DIN, ISO, and UOP.

## Entry-Level Sampling System offering High-End Features

The XLS-30 is set up to work with 2 mL vials from a 30 position sample tray. Analysis time is determined dynamically based on the selected sample volume and customized methods are available for specific application requirements. Due to the unique design of the XLS-30, the sample is dispensed with high accuracy and the needle is rinsed with a selectable volume of solvent. Cross contamination is avoided because the sample never gets in contact with the syringe. The system status is indicated by an LED strip and performance parameters are continuously monitored in TEIS Software. Calibration sequences are created effortlessly by the auto-dilution function and related software wizard. Rely on the robustness of the XLS-30 and improve your analytical performance in terms of repeatability.

Features	Benefits
Creation of Standards by Auto-dilution	Time saving - Auto calibration
Small footprint	Save bench space
Accurate and repeatable sampling of 5 - 250 $\mu$ L	Broadens application range
LED system status indication	Intuitive design
Dynamic analysis time	High sample throughput
Efficient needle wash	Reduced carry over

## Test Method Compliance

The XLS-30 aspirates a pre-defined sample volume with high accuracy and volumetrically injects the sample material at a constant rate into the introduction module. The automatic sampling and injection device ensures uniform introduction of liquid samples into the direct injection- or boat module of the XPLOER Series or XPREP C-IC. The XLS-30 features a micro-liter syringe with large capacity (5 - 250  $\mu$ L) and a versatile constant rate injector (0.5 - 30  $\mu$ L/s). The XLS-30 forms a powerful combination together with the elemental combustion solutions of TE Instruments in full compliance with, but not limited to, the following international test methods:

### TS (UV-F)

- ASTM D5453
- ASTM D7183
- EN ISO 20846
- UOP 987 – Part A

### TN (CLD)

- ASTM D4629
- ASTM D5762
- ASTM D7184
- UOP 936
- UOP 981

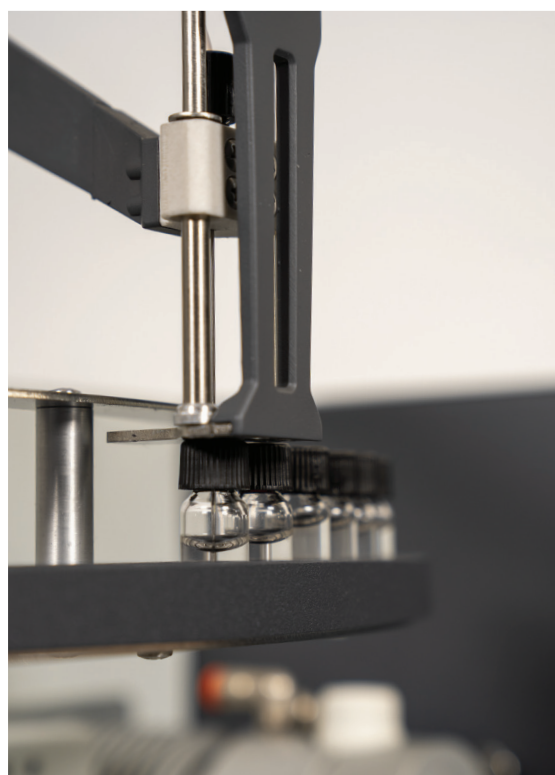
### TX/TS (MCT)

- ASTM D3120
- ASTM D4929
- ASTM D5808
- UOP 779

### C-IC

- ASTM D7359
- UOP 991

## Sampler Specifications



Dimensions (W x H x D)	23.5 cm x 44.8 cm x 43.5 cm 9.3 in x 17.6 in x 17.1 in
Compatibility	Xplorer Series Xprep C-IC
Weight	7.2 kg (15.9 lbs)
Power requirement (max)	72W
Voltage	100-240V, 50-60Hz, 1.5 A
Software control	TEIS Software over USB
Accuracy	Better than 2% RSD
Plunger tip	PTFE
Aspirate & dispense speed	0.5 - 30 $\mu$ L/s
Injection volume	5 - 250 $\mu$ L
Vial positions	30
Vial size	2 mL
Analysis time	2-5 minutes, direct injection mode Depending on selected volume
Needle	Replaceable, side hole tip